

# LOTUS<sup>®</sup>

Performance, Delivered.<sup>™</sup>



## Smart Entrance Door Lock

X61

Made in China/Fabriqué en Chine  
Lotus Tool Group (Philippines)  
[www.lotustools.ph](http://www.lotustools.ph)



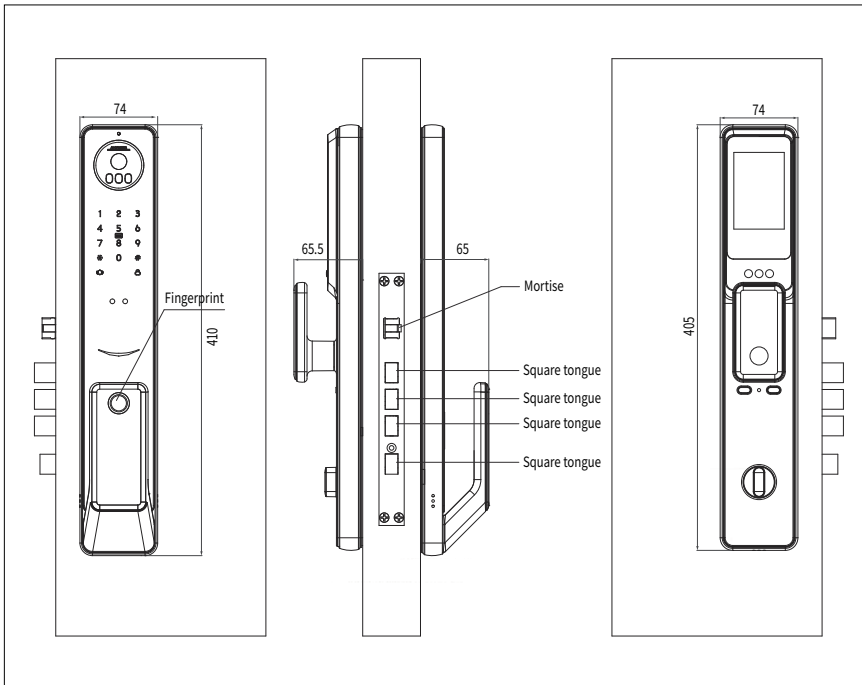


# Product Parameters and Drawing

## 1.1 Product parameters

Power supply	7.4V lithium battery
Typical static current	<70 mA
Number of open faces/Palm Veins	≤50 groups (users numbered from 2 to 100)
Number of fingerprints	≤99 groups (numbered from 2 to 100 users)
Number of IC Card	≤100 groups (users numbered from 2 to 100)
Number of door opening codes	≤100 groups (Administrator number 1, user number 2-100)
Image sensor	1/4" CMOS, 1280x800 pixels
Camera lens	84.2° field Angle, focusing distance 50cm(35.5-84.7 cm), <1.5% distortion rate
Quick unlock time	≤1.5 seconds
Face recognition distance	0.3~1 m
Operating temperature	-10°C to 60°C
Relative humidity	45% ~ 90%

## 1.2 Product Drawing

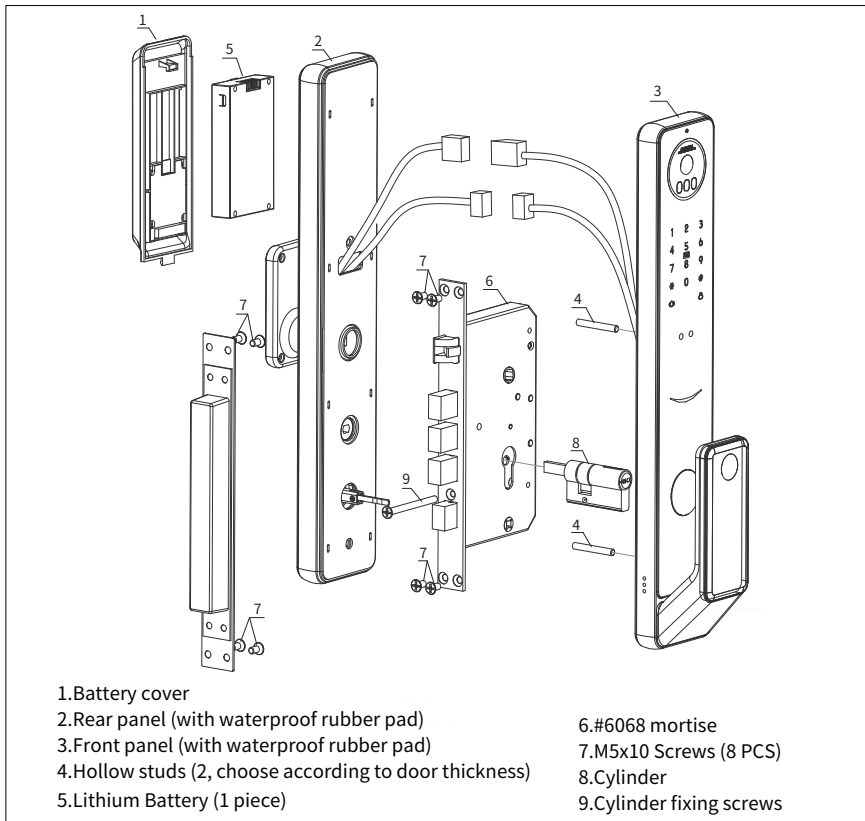


# 2 Product List and Installation Drawing

## 2.1 Product List

No.	Name	Quantity	Remark
1	Front panel (including rubber pad)	1 piece	
2	Rear panel (including rubber pad)	1 piece	
3	6068 Mechanical lock mortise	1 piece	
4	Installation kit	1 pack	
5	User manual	1 volume	
6	Warranty card	1 sheet	
7	Lithium battery	1 piece	
8	Cylinder + keys	1set	
9	Strike plate	1 piece	
10	Drilling template	1 sheet	
11	Smart card	2 pieces	

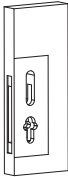
## 2.2 Installation Drawing



# 3

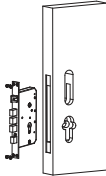
## Installation order

### 3.1 Open hole on door



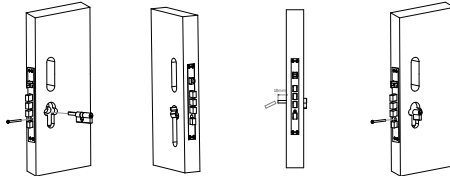
1. Draw a horizontal center line 1 meter from the ground on both sides of the door.
2. Fold the opening template in half, align the center line of the handle of the opening template with the horizontal line on the door, and draw the opening line on the front and side of the door according to the requirements of the opening template.
3. Open the mounting holes of the panel and lock mortise according to the requirements of the opening template.

### 3.2 Install lock mortise



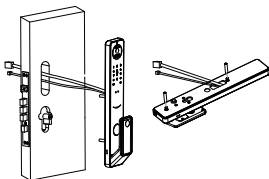
1. Insert the lock body into the opened door hole (for a door with a heaven and earth bar, connect the heaven and earth bar hook on the lock body to the heaven and earth bar inside the door).
2. Install the lock body to be installed into the lock body hole and fix it on the door with four wooden door tapping screws or four M5x10 machine wire screws.

### 3.3 Install lock mortise



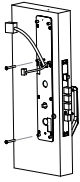
1. Insert the lock mortise into the lock body, fasten with screws.
2. Based on the facade, the length of the rear pulling rod of the lock core tail is retained 18MM, and the excess part is removed.

### 3.4 Front panel mounting



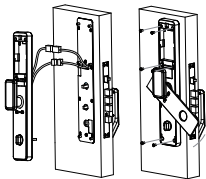
1. The waterproof rubber pad is set on the front lock body, and the two hollow studs are locked on the front lock body
2. Thread the connecting wire of the front panel through the hole in the door, and then close the front panel to the door.

### 3.5 Rear panel mounting



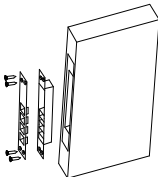
1. The waterproof rubber pad is set on the back bottom plate, and the connecting line of the front panel passes through the hole of the back bottom plate.
2. As shown in the figure, and then the back bottom plate close to the door, aligned with the front panel hollow studs, using 2pcs M5 screws fixed, adjust the front panel and the bottom plate to keep flush with the door frame, to prevent the impact of eccentricity door lock use effect.

### 3.6 Install rear panel



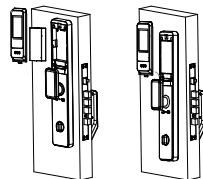
1. Connect the air connection of the front panel to the rear panel.
2. Align the quick-opening square shaft lock core tail hook and anti-lock flat bar successively and insert them into the corresponding hole. (The locking flat strip is cut according to the thickness of the door)
3. with 6pcs M5 screws and the bottom plate fixed.

### 3.7 Door buckle plate and door buckle box installation



1. Close the door and the door frame, draw the position of the lock tongue on the door frame with a pencil and then draw the opening shape of the door frame.
2. After opening the hole, place the door fastener in the box and fix the door fastener with 4 screws in the order shown on the left.
3. After closing the door, test whether the lock tongue can be fully extended.

### 3.8 After installation debugging



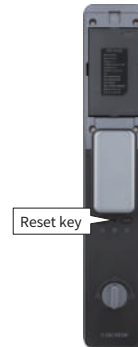
1. Install battery and cover to make the door lock work normally
2. Pull the lock knob to check and adjust until smooth.
3. Insert the mechanical key into the lock hole of the front plate, turn the key accordingly to check whether the mechanical key can open the door normally.
4. Test the function of the door lock after setting the door lock according to the door lock operation guide.

### 3.9 Restore factory settings

3.9.1. Press and hold the reset button for 10S on rear panel, the door lock will return to the factory default, and the voice and light will be restored successfully.

3.9.2. The factory default password is 123456, all fingerprint password card registration are cleared, and the operation record remains unchanged.

3.9.3. Or you can follow up the voice prompt, select 1 door lock function --> then select 3 Door lock setting --> then select 4 More Settings --> then select 3 Initialize to make the lock return to the factory default.



### 3.10 Low voltage alarm and battery replacement method

- Before charging the lithium battery, make sure it is compatible with the charger.
- Connect the charger to a power source and plug in the lithium battery.
- Follow the manufacturer's instructions regarding the charging time and voltage.
- Do not leave the lithium battery unattended while charging.
- Once the battery is fully charged, disconnect it from the charger.



#### **! WARNING:**

- Do not dispose of lithium batteries in regular trash or incinerate them.
- Contact your local waste management authority or recycling center for proper disposal instructions.
- Some regions have specific recycling programs for lithium batteries. Make sure to follow the guidelines provided.
- If the lithium battery is damaged or leaking, handle it with care. Wear protective gloves and place it in a plastic bag or container to prevent further damage.
- It is important to recycle lithium batteries to prevent environmental contamination and promote the recovery of valuable materials

### 3.11 Mechanical key unlock

When the battery has no power, use 5V power bank +Type C USB cable and connect the Type C USB port of the external emergency power supply to unlock normally, or use the mechanical key to unlock.

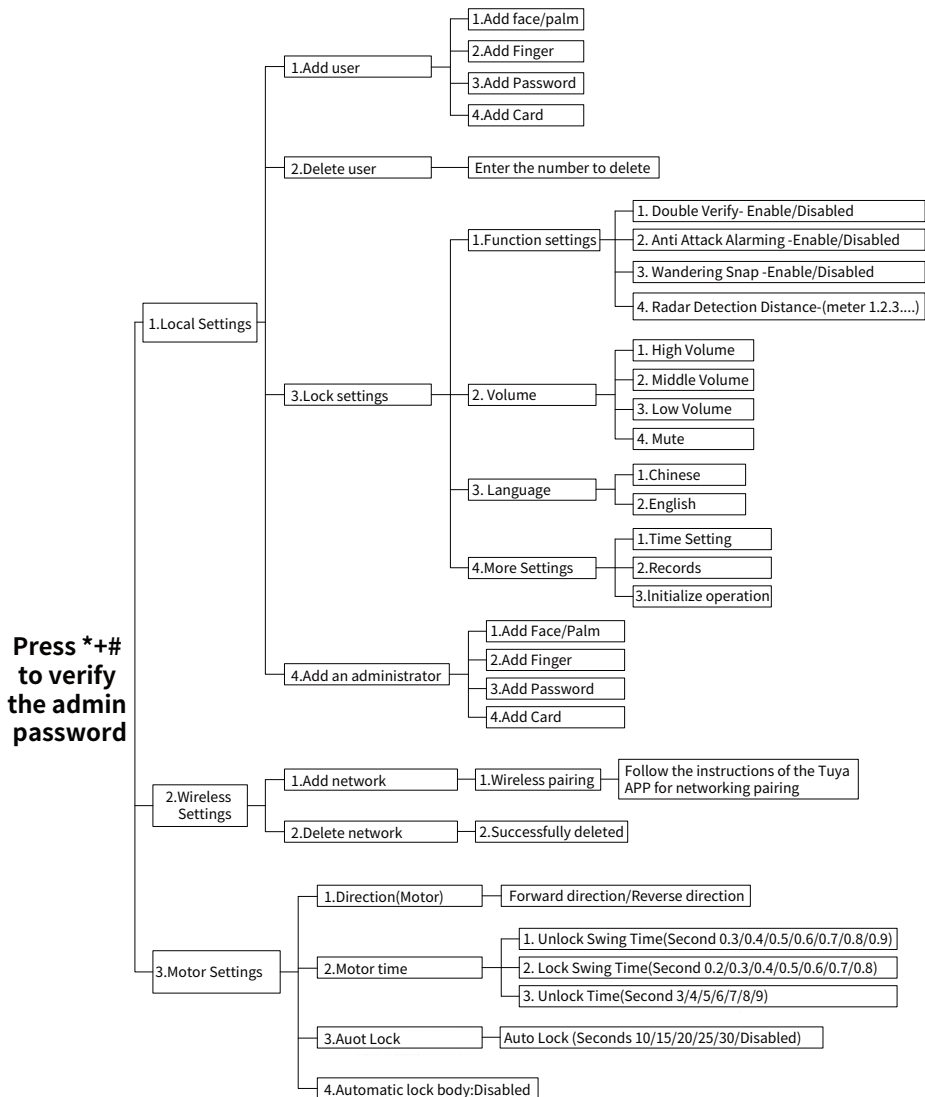


# 4

## APP Usage instructions

### 4.1 Door lock function operation extension map

X61 intelligent door lock operation map





# Function and Operation

## 1. Language switch (initial state use)

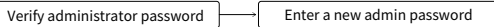
555666888# Use Chinese  
555666880# Use English  
555666881# Use Vietnamese  
555666882# Use Portuguese  
555666883# Use Arabic  
555666884# Use Russian  
555666885# Use the Kazakh language  
555666886# Use Spanish  
555666889# Use French

## 2. Initial status

Factory default management password is "123456" can unlock the door;  
Before use, you need to change the management password to access the menu;  
In the initial state, the body sensor will automatically open, any face can unlock the lock.

## 3. General operation rules

If it is used for the first time, you need to add a set of management passwords and set the initial verification password to 123456.

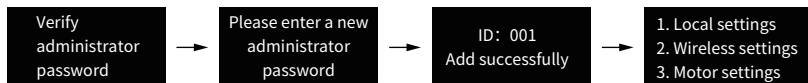


The # key is the confirm key or the function key for entering the menu.  
The \* key is the clear or Back key. When entering a password, press to clear the input.

## 4. Access lock function management



In the initial state, after the touch screen is lighted up, press "\*"#" or directly press the "Set" key on the rear panel to prompt verification of the management password. Input "123456" to enter the new administrator password. After the addition is completed, the voice will announce: "001 added successfully", and the door lock function management can be entered, as shown in the following figure:

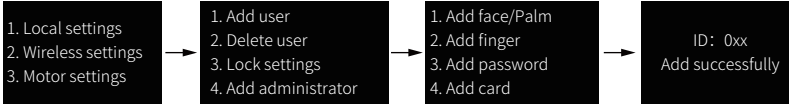


After entering the menu, voice broadcast: "1. Local settings 2. Wireless settings 3. Motor settings"



## 5. Add an user

Add user can be to add face/Palm, card, password and fingerprint, enter the function according to the display and voice prompt operation, select to add the type.

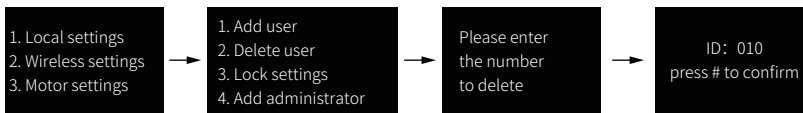


"Voice broadcast:" 1. Add face/Palm 2. Add finger 3. Add password 4. Add card "

Note: The ID will be added automatically from "Id:10" in sequence, the password number is 6 to 12, the number of users is 90, the maximum number of face/palm users can be added to 50, add face/Palm or and add fingerprint is optional, if there is no access to the corresponding module, will not be displayed automatically.

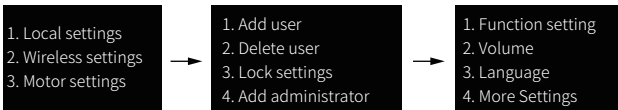
## 6.Delete an user

Delete user information can be face/Palm, fingerprint, card or password, after entering the function according to voice prompt operation. the voice broadcast "Please enter the number to delete". After entering the number to be deleted, press the # key to confirm deletion.



## 7.Lock settings

After entering the function, follow voice prompts. Screen: "1. Function Settings, 2. Volume adjustment, 3. Language Settings, 4. More Settings"



Voice broadcast: "1. Function setting 2. Volume 3. Language 4. More Settings"

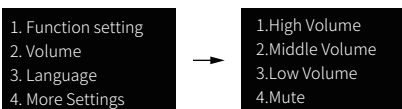
### (1)Function setting

Function Settings can choose to open or close the lock information double verification, anti-attack alarming and mute mode. Press the "#" key to play the voice repeatedly. Voice broadcast: 1.Double verify-Enabled/Disabled 2.Anti Attack Alarming-Enabled/Disabled 3.Wandering Snap-Enabled/Disabled 4.Radar Detection Distance-Meter ( 0,1,2.....9)



### (2)Volume adjustment

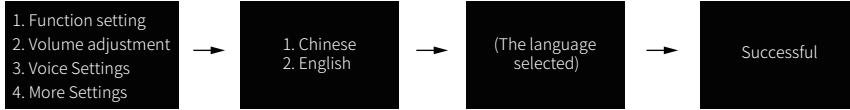
The volume adjustment can adjust the voice volume of the door lock. After entering the interface, select key 1 or key 2 as prompted to adjust, and the volume will increase or decrease accordingly. Press the "#" key to play the voice repeatedly.



Voice broadcasts: "1.High Volume 2.Middle Volume 3.Low Volume 4.Mute"

### (3)Language Settings

Language Settings can adjust the voice language. After entering the interface, select button 1 or button 2 as prompted to adjust the Chinese voice or English voice. Press the "#" key to play the voice repeatedly.



Voice broadcasts: 1. Chinese 2. English

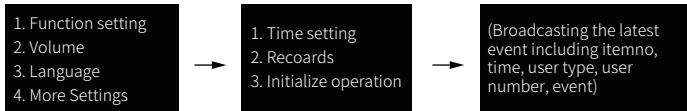
### (4)Time setting

Time setting can adjust the system time of the door lock. Select 4 to enter more settings, then select 1 to enter Time setting. After entering the interface, the door lock first broadcasts the current time, and then enters the time setting interface. Then press the key to enter the year, month, day, hour and minute according to voice prompts.



### (5)Record query

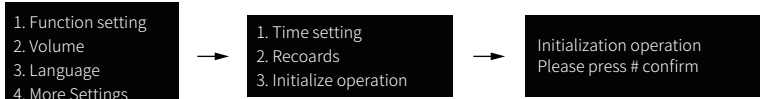
Record query, used to query door lock logs, log records include unlocking events, add, delete, modify user events.



Press the number key: "5.the previous record, 8. the next record"

### (6)Restore factory Settings

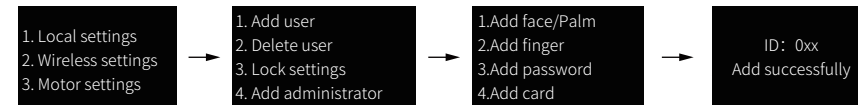
Restore the lock to factory defaults, and the administrator password is restored to 123456.



Press the key '\*' to cancel, '#' to confirm

## 8. Add an administrator

Face / Palm, fingerprint, password, card can be added as administrator, enter the function according to voice prompt operation, select to add the type.



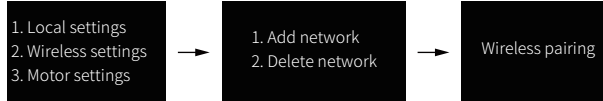
Voice broadcast: "1. Add face/Palm 2. Add finger 3. Add password 4. Add card".

Note: The ID is automatically added in sequence, and the password contains 6 to 12 digits. There are total 9 administrator users including the 1st admin password. Number 1 is the management password entered for the first time.

## 9. Wireless Setting

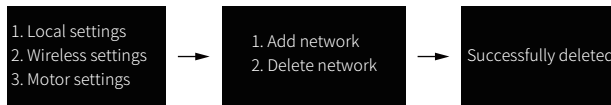
### 1. Add network

Select 2 to enter into wireless setting, select 1 to enter into wireless pairing status, at same time, operate on the smart phone to add device, the lock can be added to smart phone APP through 2.4G wireless network.



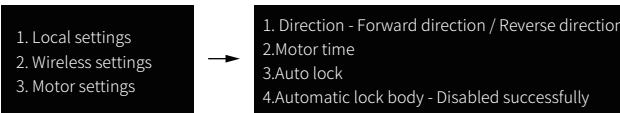
### 2. Delete network

Select 2 to enter into wireless setting, select 2 to delete network after the smart lock added into network. You can also delete network by remove the smart lock from APP.



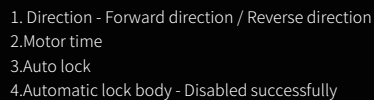
## 10. Motor settings

Note: The normal installation Settings are used during installation and debugging. Exercise caution when performing this operation.



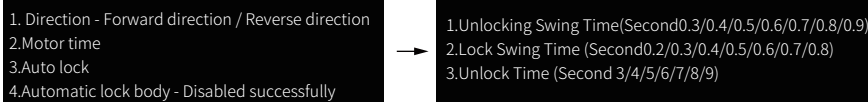
### ► Motor settings

Press 3 to enter the "motor settings", select 1"Direction", set the forward direction/reverse direction, to adapt to the needs of different directions of the door. After setting, the system will unlock the lock once to confirm the rotation direction. If the lock is unlocked during setting, the direction is normal.



### ► Motor time

Enter into motor time interface, voice broadcast: "1.Unlocking Swing Time(Second0.3/0.4/0.5/0.6/0.7/0.8/0.9) 2.Lock Swing Time (Second0.2/0.3/0.4/0.5/0.6/0.7/0.8) 3.Unlock Time (Second 3/4/5/6/7/8/9)"



According to the requirements of the lock body, the reverse time of the instant emergency knob popping out of the inclined lock tongue can be selected when opening the door. (Note: The unit of reversal time is 0.1 seconds, default is 0.3s). Select 1 to set up the unlocking swing time, the unit of swing time is 0.1s, default is 0.3S, press 1 again to increase 0.1S, it recycles from 0.3S to 0.9S. Select 2 to set up the lock swing time, the unit of swing time is 0.1S, default is 0.2S, press 2 again to increase 0.1S, it recycles from 0.2S to 0.8S. Select 3 to set up unlock time, it's used to set up the period of the lock keeps unlocking, the default unlock time is 3s, press 3 again to increase 1S, it recycles from 3s to 9s.

### ► Auto Lock

1. Direction - Forward direction / Reverse direction  
2. Motor time  
3. Auto lock  
4. Automatic lock body - Disabled successfully



Seconds 10/15/20/25/30/Disabled

Auto lock is used to set up the period of deadbolt locking time or disable auto lock function. It cycles from 10S / 15S / 20S / 25S / 30S / Disabled.

### ► Automatic Lockbody

1. Direction - Forward direction / Reverse direction  
2. Motor time  
3. Auto lock  
4. Automatic lock body - Disabled successfully



Disabled successfully

Note: it's default setting

## 10. Restore factory Settings

Press and hold the SET key on the rear panel for 5 seconds, and the message "Initialize operation, confirm, please press #" is displayed. After pressing #, the system enters the factory Settings restoration mode, and all unlocking information and records will be cleared. After successful operation, the initial password is 123456 (for administrator verification).

## 11. Other instructions

- ◆ If you enter an incorrect password for more than 5 consecutive times within 5 minutes, the keyboard is locked and the system does not respond to any operations in 90 seconds. You can press the setting key on the rear panel to enter the administrator and unlock the password.
- ◆ Password anti-prying function: Enter the password as follows when opening the password :XXX password XXX: you can add some irrelevant codes before and after the password, and then press # to confirm. The password must be included in the input.
- ◆ If no operation is performed for more than 20 seconds, the system will automatically exit.
- ◆ When the voltage is lower than 6.9V, it will automatically alarm every time the lock is opened. After the alarm, the door lock can be unlocked 200 times. If the number of times exceeds the alarm, the lock will be prohibited.
- ◆ Human body induction, every time after unlocking the lock will delay 10 seconds to restart, to prevent the wrong start.
- ◆ Human body induction automatically triggered 5 times, 5 times out of time no face detected or unlocked, the system will temporarily shut down the induction for 2 hours, 2 hours later or after the next operation can be restored, to prevent people from walking around in the frequency of the occasion of false wake up anti power consumption.
- ◆ Press "00#" to play the current system version number, "XXX-XXX ". The first three digits are the mainboard version number and the last three digits are the rear board version number.
- ◆ Press 99# to display the current time of the voice broadcast.
- ◆ In the initial state, press "888#" to quickly enter the installation and setting menu, compatible with the operation mode of the old version, convenient to adjust the motor direction.

# Tuya APP Instructions

## 1. APP download

Search “Tuya Smart” in play store / App Store or scan the QR code below to download the APP.

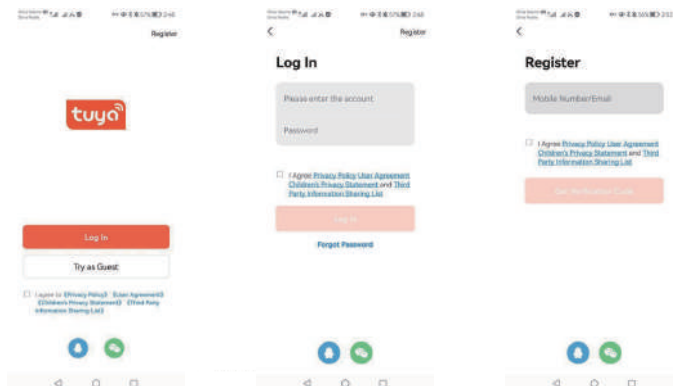


## 2. Register / Login / Forget password

After download and install the APP, you can register an account by mobile phone number or email address. You can also select Try as Guest to use a trial version, but some function is not allowed to use.

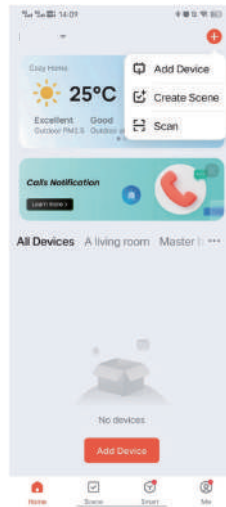
If you already have an account, log in by mobile phone number / email address and password.

If you forget the password, you can reset a new password by click “Forget Password”



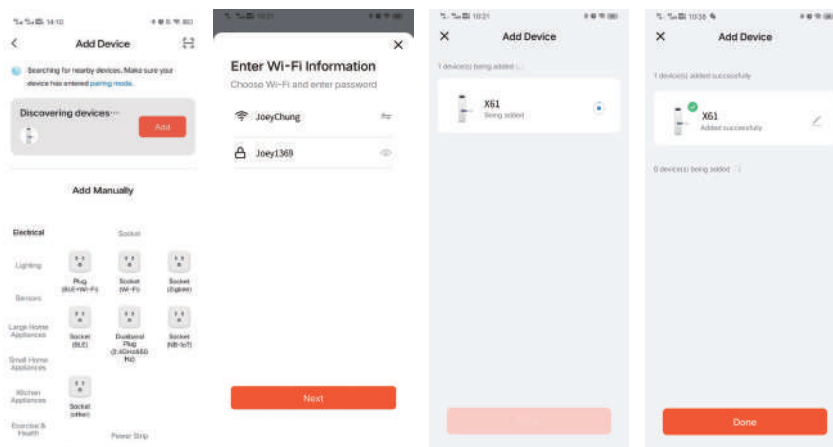
### 3. Add Tuya smart lock

- 1 Enter \*# + admin password # Press 2 "Wireless Settings" --> Press 1 "Add Network" --> Prompt "Wireless pairing"
- 2 Operate on smart phone APP, click add device and select the device to be added.



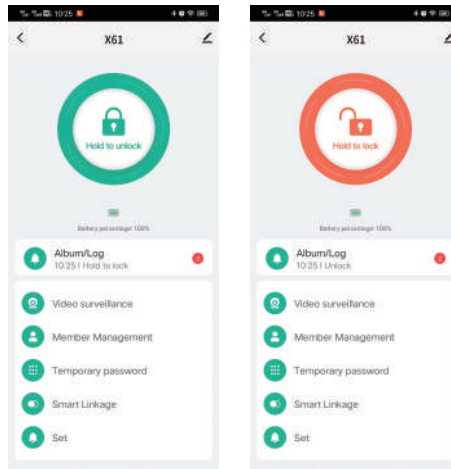
#### ③ Equipment pairing

Select the lock type you need, enter the distribution mode, and turn on Bluetooth to search for the required device. After discovering the device, click Add, enter the WIFI you want to connect, and then wait for the connection to succeed.



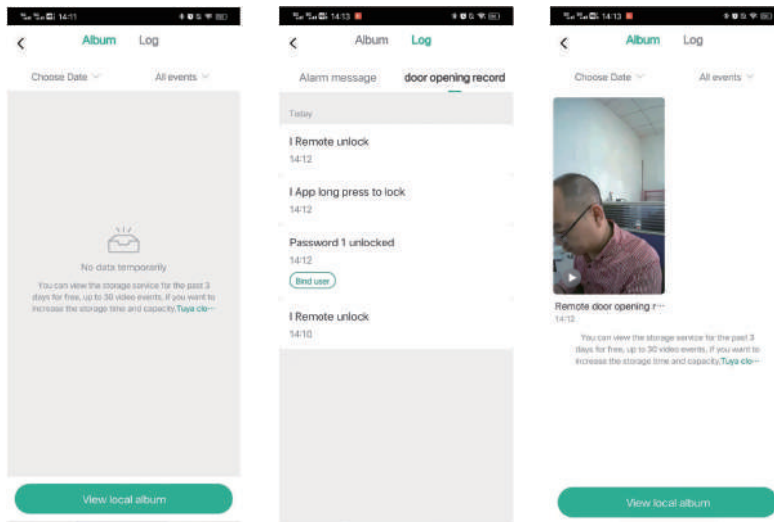
### ① Unlock the lock

The unlocking method of Tuya active intercom has become a long press the unlocking icon to unlock, and the locking is the same. The long press time is about 5-6 seconds, and the feedback is not strong (there is no sound or vibration warning when pressing the lock on the mobile phone).



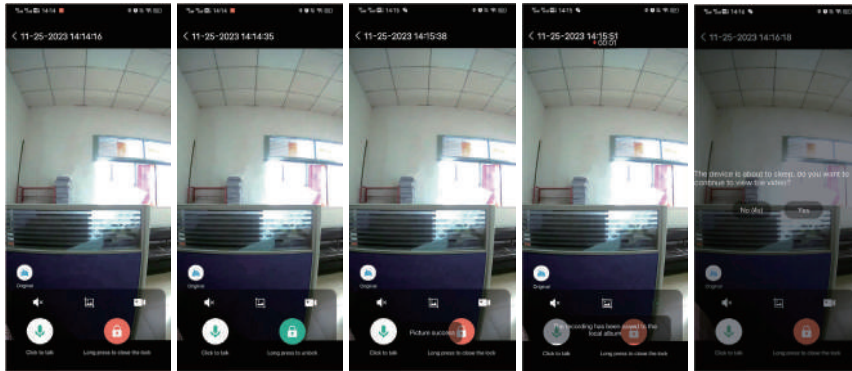
### ② Local record

Compared with the passive intercom, the local log has an additional album. You can find unlock records, alarm records, photos and videos in the album/journal. Videos and pictures are saved locally, and can be saved on the Tuya APP for money.



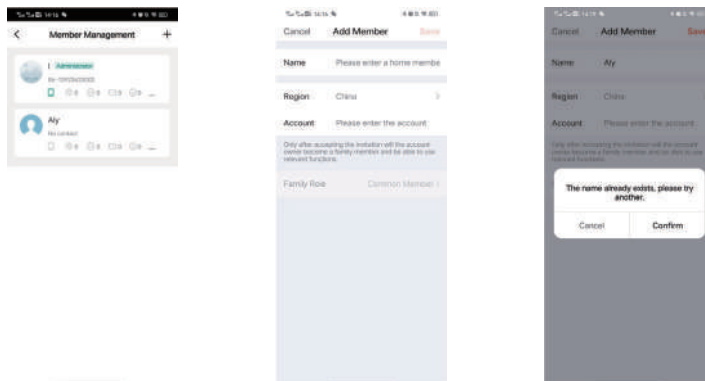
### ③ Active intercom

Press video surveillance to enter the active intercom, you can take the initiative to open and close the lock, are to long press about 3-4 seconds. At the same time, the active unlocking and locking will not immediately exit the monitoring, there is a period of time to continue monitoring, when the device to sleep, you can choose to continue to watch monitoring or sleep. At the same time, you can use the surveillance to take photos and videos, videos and pictures are saved in the local. (See ①)



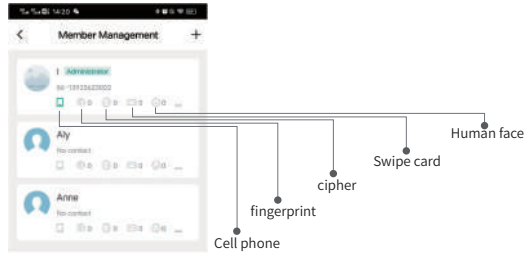
### ④ Member management

1. Here you can see what has been recorded and how many there are. You can press + to add a member, either a common user or an administrator.





2. How to see what has been added and how much in member management. First of all, we need to add fingerprints, passwords, etc., on the lock, and then use the added passwords, fingerprints, etc., to open the lock, the mobile APP record will appear a prompt, the required fingerprints, passwords, etc., can be associated with the required administrator or other members.



### ⑤ Temporary password

Tuya APP can set a temporary password, there are several temporary passwords can be set.



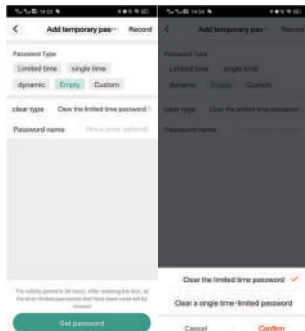
1. Time-limited password



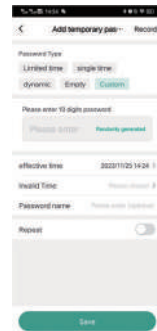
2. Single password



3. Dynamic password



4. Clear the password

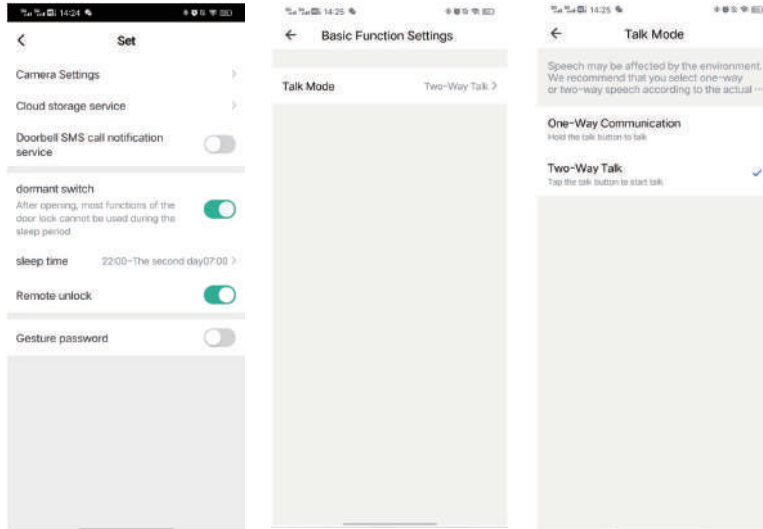


5. Customize the password

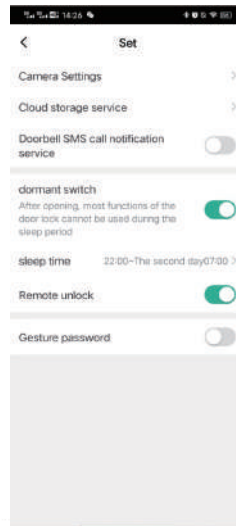
## ⑥ Settings

### 1. Camera

You can set the intercom mode



### 2. Other Settings



# Rear Display Description

## Button function

Three buttons: ◀ Screen quenching time ○ Video viewing ▶ Version number

## Interface description

