

LOTUS[®]
Performance, Delivered.[™]



20L Wet/Dry Vacuum Cleaner

LT1200DWX/20

Made in China/Fabriqué en Chine
Lotus Tool Group (Philippines)
www.lotustoolworks.com



Thank you for purchasing this **LOTUS®** wet/dry vacuum cleaner. Feel confident that with our **LOTUS®** wet/dry vac you are obtaining a high quality product engineered for optimal performance. This vacuum is capable of picking up liquids and dry materials.

FOR YOUR SAFETY CAREFULLY READ AND UNDERSTAND ALL INSTRUCTIONS

WARRANTY

We take pride in producing a high quality, durable product. This **LOTUS®** utility vac carries a limited six (6) month warranty against defects in workmanship and materials from date of purchase under normal household use. If product is to be used for commercial, industrial or rental use, a 90 day limited warranty will apply. Warranty does not apply to defects due to direct or indirect abuse, negligence, misuse, accidents, repairs or alterations and lack of maintenance. Please keep your receipt as proof of purchase. This warranty gives you specific legal rights, and you may have other rights, which vary from state to state. For product service call authorized service center near in your area.

SAFETY INSTRUCTIONS & WARNINGS

IMPORTANT SAFETY INSTRUCTIONS

Read and understand all instructions before using this vacuum

Read and understand this owner's manual and all labels on the Wet/Dry Vacuum cleaner before operating. Safety is a combination of common sense, staying alert and knowing how your vacuum works. Use this Wet/Dry Vac only as described in this manual.

SAVE THIS MANUAL FOR FUTURE USE REFERENCE.

When using an electrical appliance, basic precautions should always be followed including the following :

WARNING: TO REDUCE THE RISK OF FIRE, ELECTRIC SHOCK OR INJURY:

- Do not run vac unattended.
- Do not vacuum, or use this Wet/Dry Vac near flammable liquids, gases, or explosive vapors like gasoline or other fuels, lighter fluids, cleaners, oil-based paints, natural gas, hydrogen, or explosive dusts like coal dust, magnesium dust, grain dust, or gun power. Sparks inside the motor can ignite flammable vapors or dust.
- Do not vacuum anything that is burning or smoking, such as cigarettes, matches, or hot ashes.
- Keep cord away from heated surfaces.
- Do not expose to rain. Store indoors.
- Do not unplug by pulling on cord. To unplug, grasp the plug, not the cord.
- Do not use with damaged cord, plug or other parts.
- If appliance is not working as it should, has been dropped, damaged ,left outdoors, or dropped into water, return it to a service center.
- Do not pull or carry by cord, use cord as handle, close a door on cord, or pull cord around sharp edges or corners.
- Do not run Wet/Dry Vac over cord.
- Do not handle plug or the Wet/Dry Vac with wet hands.
- To reduce the risk of health hazards from vapors or dusts, do not vacuum toxic materials.
- Do not use or store near hazardous materials.
- Do not use this Wet/Dry Vac with a torn filter or without the filter installed except when vacuuming liquids as described in the operation section of this manual.
- Do not allow to be used as a toy. Close attention is necessary when used by or near children.
- To reduce the risk of injury from accidental starting, unplug power cord before changing or cleaning filter.

- Do not leave Wet/Dry Vac unattended when plugged in. Unplug from outlet when not in use and before servicing.
- Turn off Wet/Dry Vac before unplugging.
- Do not put any object into ventilation openings. Do not vacuum with any ventilation openings blocked; keep free of dust, lint, hair or anything that may reduce air flow.
- Keep hair, loose clothing, fingers, and all parts of body away from openings and moving parts.
- To reduce the risk of falls, use extra care when cleaning on stairs.

When using as blower:

- Direct air discharge only at work area.
- Do not use Wet/Dry Vac as a sprayer.
- Do not direct air at bystanders.
- Keep children away when blowing.
- Wear safety goggles.

DOUBLE INSULATION INSTRUCTIONS

This Wet/Dry Vac is double-insulated, eliminating the need for a separate grounding system. Use only identical replacements parts. Read the instructions for Servicing Double-Insulated Wet/Dry Vacs before servicing. Use this Wet/Dry Vac as described in this manual. Observe the following warnings that appear on the motor housing of your Wet/Dry Vac.




DOUBLE INSULATED - GROUNDING NOT REQUIRED - WHEN SERVICING USE ONLY IDENTICAL REPLACEMENT PARTS.

WARNING: TO REDUCE THE RISK OF ELECTRIC SHOCK-DO NOT EXPOSE TO RAIN. STORE INDOORS.

WARNING: FOR YOUR OWN SAFETY, READ AND UNDERSTAND OPERATOR'S MANUAL. DO NOT RUN UNATTENDED. DO NOT PICK UP HOT ASHES, COALS, TOXIC, FLAMMABLE OR OTHER HAZARDOUS MATERIALS, DO NOT USE AROUND EXPLOSIVE LIQUIDS OR VAPORS.

CAUTION:

- Do not vacuum drywall dust or fireplace soot or ash with standard Wet/Dry filter. This type of dust is very fine which may not be captured by the filter and cause damage to motor. When vacuuming fine dust use a fine dust filter (sold separately).

WARNING: SERVICING OF DOUBLE-INSULATED WET/DRY VACUUM WITH A DOUBLE-INSULATED WET/DRY VACUUM, TWO SYSTEMS OF INSULATION ARE PROVIDED INSTEAD OF GROUNDING. NO GROUNDING MEANS IS PROVIDED ON A DOUBLE-INSULATED APPLIANCE, NOR SHOULD A MEANS FOR GROUNDING BE ADDED. SERVICING A DOUBLE INSULATED WET/DRY VACUUM REQUIRES EXTREME CARE AND KNOWLEDGE OF THE SYSTEM, AND SHOULD BE DONE ONLY BY QUALIFIED SERVICE PERSONNEL. REPLACEMENT PARTS FOR A DOUBLE-INSULATED WET/DRY VACUUM MUST BE IDENTICAL TO THE PARTS THEY REPLACE. YOUR DOUBLE-INSULATED WET/DRY VAC IS MARKED WITH THE WORDS 'DOUBLE INSULATED' AND THE SYMBOL  (SQUARE WITHIN A SQUARE) MAY ALSO BE MARKED ON THE APPLIANCE.

- To reduce the risk of electric shock-unplug before cleaning or servicing.
- DO NOT use without filters in place.

CAUTION: TO REDUCE THE RISK OF INJURY FROM MOVING PARTS- UNPLUG BEFORE SERVICING.

SPECIFICATIONS

Motor:	1250W.
Rated Frequency:	220-240V~50Hz
Container:	20ltr.
Filter - Dry:	Dust filter.
Filter - Wet:	Foam filter.

ELECTRICAL SAFETY

WARNING! Read these electrical safety instructions thoroughly before connecting the product to the mains supply.

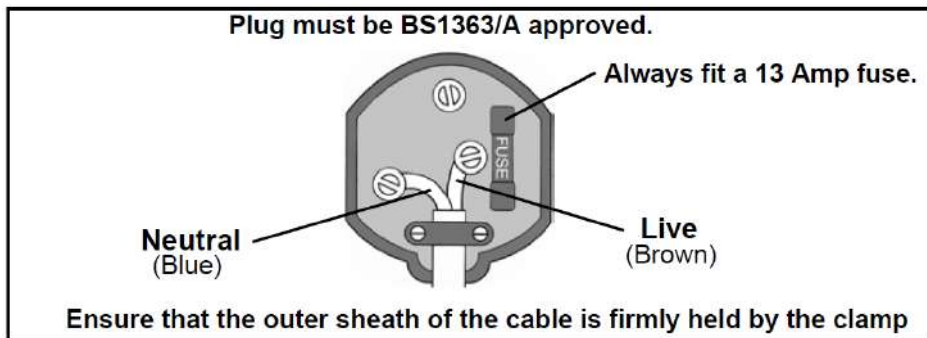
Before switching the product on, make sure that the voltage of your electricity supply is the same as that indicated on the rating plate. This product is designed to operate on 230V AC 50Hz. Connecting it to any other power source may cause damage. This product may be fitted with a non-rewireable plug. If it is necessary to change the fuse in the plug, the fuse cover must be refitted. If the fuse cover becomes lost or damaged, the plug must not be used until a suitable replacement is obtained.

If the plug has to be changed because it is not suitable for your socket, or due to damage, it should be cut off and a replacement fitted, following the wiring instructions shown below. The old plug must be disposed of safely, as insertion into a mains socket could cause an electrical hazard.

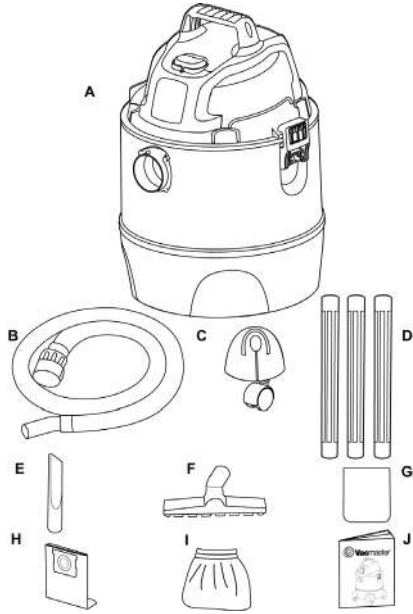
WARNING! The wires in the power cable of this product are coloured in accordance with the following code: Blue = Neutral Brown = Live

If the colours of the wires in the power cable of this product do not correspond with the markings on the terminals of your plug, proceed as follows.

- The wire which is coloured **Blue** must be connected to the terminal which is marked **N** or coloured **Black**.
- The wire which is coloured **Brown** must be connected to the terminal which is marked **L** or coloured **Red**.

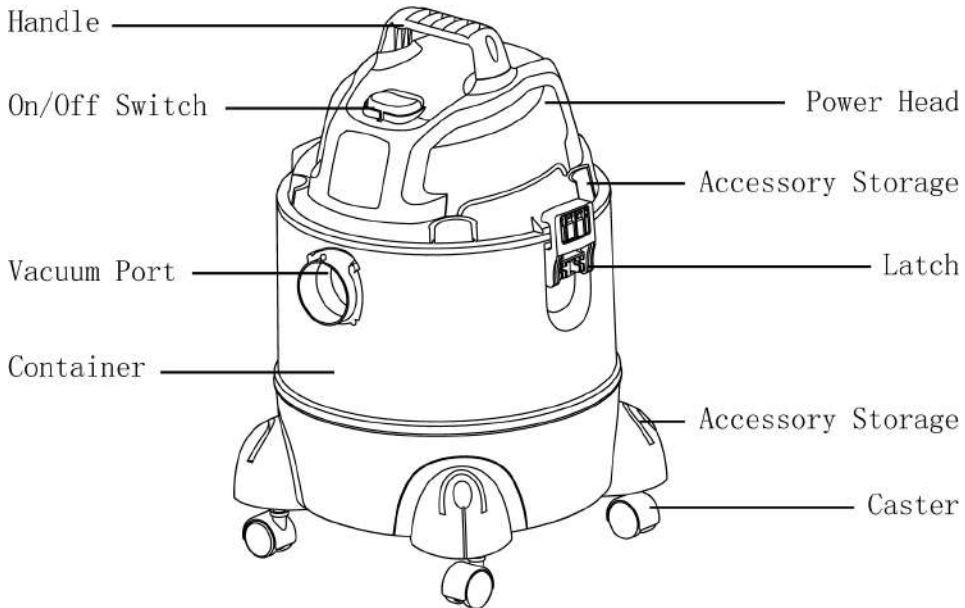


UNPACKING AND CHECKING CARTON

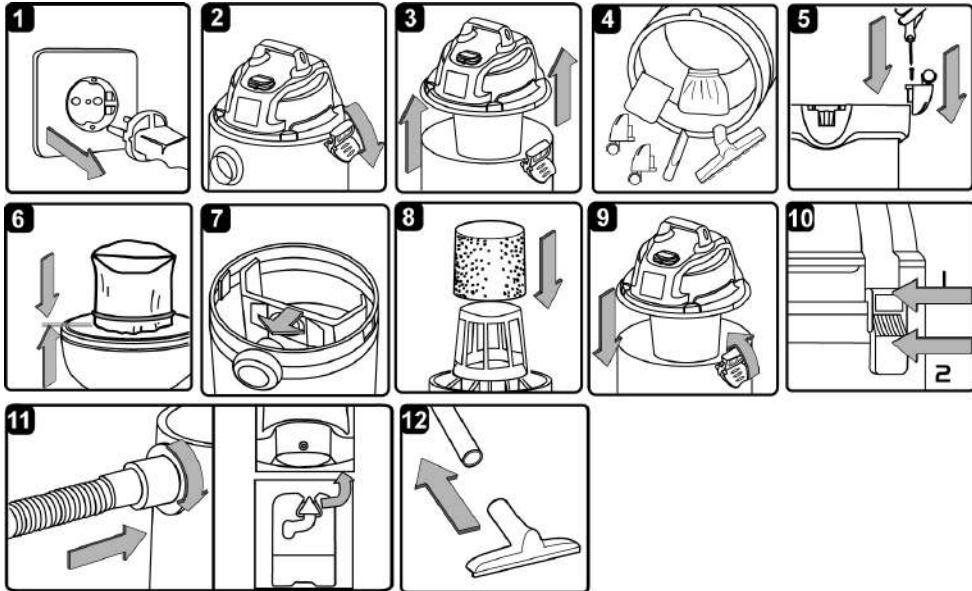


1. Overview of the Appliance Components

A	Vac assembly.....	1
B	Hose.....	1
C	Caster	4
D	Extension wands.....	3
E	Crevice tool.....	1
F	Floor brush.....	1
G	Foam filter.....	1
H	Dust bag.....	1
I	Dust filter.....	1
J	Operator's manual.....	1



GENERAL ASSEMBLY INSTRUCTIONS



- 3.1 Verify that the power cord is disconnected from the power outlet.(As show in fig.1)
- 3.2. Undo the latches. (fig.2)
- 3.3. Lift the power head off the container. (fig.3)
- 3.4. Remove the contents from inside the container; make sure you have all contents as listed. (fig.4)
- 3.5. Insert the casters into the socket on to bottom of the container and apply pressure until castors snap into place (fig.5)
- 3.6. Your vacuum comes ready for dry vacuum cleaning with dust filter. If the dust filter is not installed, refer to page 13 for filter installation. (fig.6)
- 3.7. Optional, for improved dust bag, fit dust bag flange onto the inlet stub, taking care not to damage the bag. (fig.7)
- 3.8. For wet vacuum cleaning, install the supplied foam filter. If foam filter is not installed, refer to page 14 for filter installation (fig.8)
- 3.9. Place the power head back on the container, and secure into place using the 2 side latches. (fig.9 & fig.10)
- 3.10. Insert the locking end of the hose into the port of the container and turn to lock in to place. (fig.11)
- 3.11 Choose the desired accessories and extension wands and push onto the suction tube.(fig.12)

DRY VACUUM OPERATION

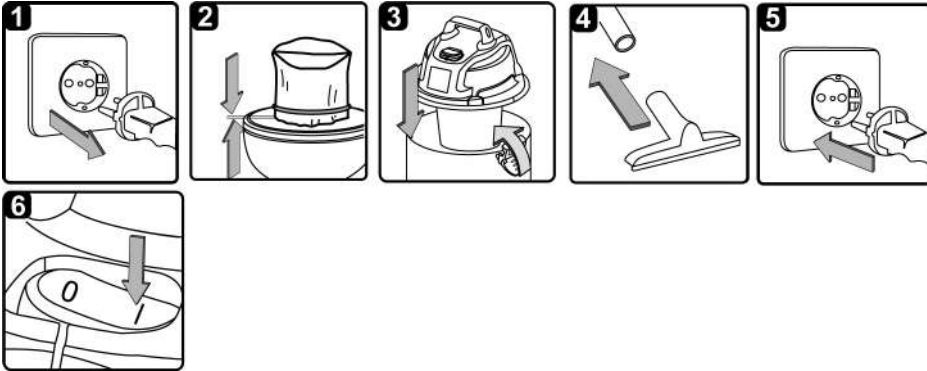
WARNING! Ensure you read, understand and apply Section 1 'Safety Instructions'.

Reminder: DO NOT vacuum hazardous substances. Use of an incorrect dust bag will invalidate your warranty.

- 4.1. Verify that the power cord is disconnected from the outlet.(fig.1)
- 4.2. Remove the top section and fit optional dust filter flange onto the inlet stub, taking care not to damage the filter. (fig. 2)
- 4.3. Place the power head back on the container, and secure it in place using the latches. (fig.3)
- 4.4. Insert the locking end of the hose into the vacuum port and screw in place. Push the required attachment onto the free end of the hose or extension.(fig.4)
- 4.5. Plug in the power cord in to the outlet.(fig.5)
- 4.6 .Turn the motor on by dipping the switch to the "I" ON position.(fig.6)
- 4.7. Once you have completed vacuuming. flip the switch to the "O" OFF position and unplug the power cord from the outlet.

O = OFF I = ON

DO NOT USE THE DUST FILTER FOR LIQUID VACUUMING



LIQUID VACUUM OPERATION



WARNING: BE SURE TO READ, UNDERSTAND, AND APPLY INFORMATION, ENTITLED 'SAFETY INSTRUCTIONS & WARNINGS'. DO NOT VACUUM IN AREAS WITH FLAMMABLE GASES, VAPORS, OR EXPLOSIVE DUSTS IN THE AIR. FLAMMABLE GASES OR VAPORS INCLUDE BUT ARE NOT LIMITED TO; LIGHTER FLUID, SOLVENT TYPE CLEANERS, OIL-BASE PAINTS, GASOLINE, ALCOHOL OR AEROSOL SPRAYS. EXPLOSIVE DUSTS INCLUDE BUT ARE NOT LIMITED TO; COAL, MAGNESIUM, GRAIN OR GUN POWDER. TO REDUCE THE RISK OF HEALTH HAZARDS FROM VAPORS OR DUST, DO NOT VACUUM TOXIC MATERIALS. WARNING: DO NOT PLUG IN POWER CORD TO POWER OUTLET, MAKE SURE PLUG IS DISCONNECTED BEFORE ASSEMBLING THE WET/DRY VAC

- 5.1. Verify that the power cord is disconnected from the outlet. Verify that the container is clean and free of dust and dirt. (fig. 1)
- 5.2. Remove dust filter, then carefully install the foam filter over the filter cage and place the power head back on the container. (fig. 2)

DO NOT USE THE DUST FILTER FOR LIQUID VACUUMING. OPERATING INSTRUCTIONS – WET VACUUMING

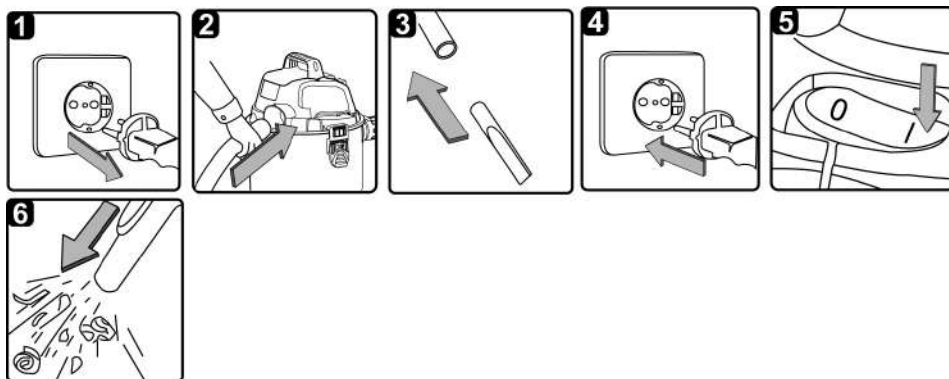
- 5.3. Fit the desired nozzle to the vacuum hose. (fig. 3)
- 5.4. Verify that the switch is in the 'O' OFF position before plugging the power cord into the outlet.(fig. 4)
- 5.5. Turn the motor on by flipping the switch to the 'I' ON position.(fig. 5)
- 5.6. After use, empty the tank and dry.

IMPORTANT! When vacuuming large quantities of liquids, do not immerse the nozzle completely in the liquid; leave a gap at the tip of the nozzle opening to allow air inflow. The machine is fitted with a float valve that stops the suction action when the container reaches its maximum capacity. You will notice an increase in motor speed. When this happens, turn off the machine, disconnect from power supply, and drain the liquid into a suitable receptacle or drain. To continue vacuuming, refit the container with the drain cap. After wet vacuuming, turn the machine off and remove plug from power supply. Empty the container, clean and dry the inside and outside before storage.

REMEMBER!

The foam filter must be removed after wet vacuuming, and a cartridge filter must be installed before dry vacuuming again.

BLOWING OPERATION



This Wet/Dry Vac has blowing capabilities.To use the blower feature follow the instructions listed.

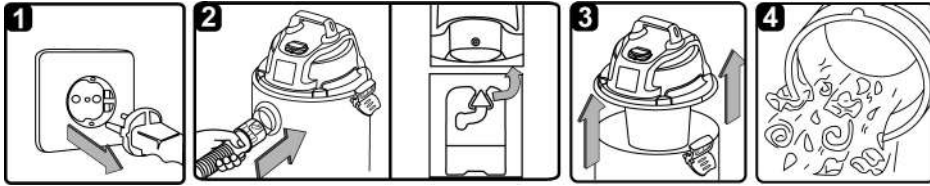
WARNING: KEEP BYSTANDERS CLEAR FROM BLOWING DEBRIS. WARNING: WEAR A DUST MASK IF BLOWING CREATES DUST THAT MIGHT BE INHALED.

- 6.1. Verify that the power cord is disconnected from the outlet.(fig. 1)
- 6.2. Make sure the container is empty before using as a blower.
- 6.3. Remove hose from the vacuum port
- 6.4. Insert the locking end of the hose into the blowing port on the back side of the power head and lock into position.(fig. 2)
- 6.5. Fit the desired extension wand or nozzle to the vacuum hose.(fig.3)
- 6.6. Ensure the power switch is turned off and plug in the power supply. (fig. 4)
- 6.7 Before turning on the vac, firmly hold loose end of the hose. Turn the motor on by

BLOWING OPERATION

flipping the switch to the 'I' ON position.(fig. 5)

MAINTENANCE



- 7.1. Verify that the power cord is disconnected from the outlet. (fig.1)
- 7.2. Disconnect the hose from the vacuum, turning large end in counter clockwise direction. (fig.2)
- 7.3. Undo the latches and remove the power head from the container. (fig.3)
- 7.4. Clear all dirt or debris from the container and hose. (fig.4)
- 7.5. Check the hose, attachments, and power cord to verify that they have not been damaged.

INSTALLING & CLEANING DUST FILTER



Installing Dust Filter

- 8.1. Verify that the power cord is disconnected from the outlet.
- 8.2. Remove power head and place in upside down position.
- 8.3. Slide dust filter down over the filter cage making sure the whole cage is covered. (fig.1 & 2)
- 8.4. Replace the power head on to the container. Removing and Cleaning Dust Filter
- 8.5. With the removed power head in the upside down position
- 8.6. Carefully remove the dust filter from the filter cage. (fig. 3) Clean the filter by gently tapping or brushing dirt off. Cleaning should not be done indoors in living areas.
- 8.7 Use a mild soap and water solution to wash dust filter and rinse with clean water. (fig. 4)
- 8.8 Allow the wet filter to air dry for 24 hours before installing onto the filter cage.

INSTALLING & CLEANING FOAM FILTER

Installing Foam Filter

- 9.1. Verify that the power cord is disconnected from the outlet
- 9.2. Remove power head and place in upside down position. Follow instructions to remove dust filter.
- 9.3. Carefully slide foam filter down over the filter cage making sure the whole cage is covered. (fig.1 & 2)
- 9.4. Replace the power head on to the container.

Cleaning Foam Filter

- 9.5. With the removed power head in the upside down position, carefully remove foam filter. (fig.3)
- 9.6. Use a mild soap and water solution to wash foam filter and rinse with clean water. (fig.4)
- 9.7. Allow filter to air dry before installing and using again.

TROUBLE SHOOTING

WARNING:

TO REDUCE THE RISK OF ELECTRIC SHOCK-UNPLUG BEFORE TROUBLESHOOTING

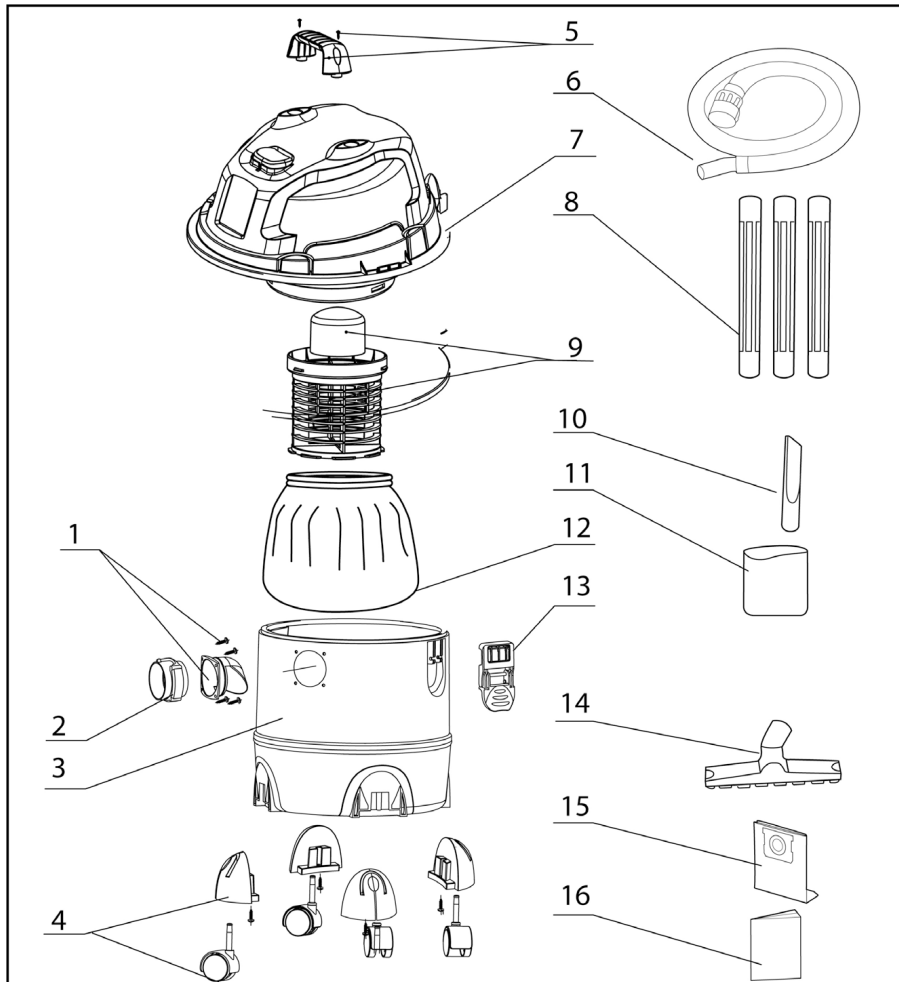
The appliance doesn't work	No power Functional fault in the power cord, switch, or motor Tank is full of liquid	Check the power supply. Have the damaged part checked by qualified personnel or replace it. Empty the tank
Dust is escaping from the motor cover	The dust bag is missing or damaged	Put in a dust bag or replace it.
Low suction power and high motor speed / vibrations	Dust bag is full Suction nozzle, hose, or tank inlet is plugged.	Replace the dust bag Check the suction nozzle, hose, and tank inlet for obstructions.

Correct Disposal of this product

This marking indicates that this product should not be disposed with other household wastes throughout the EU. To prevent possible harm to the environment or human health from uncontrolled waste disposal, recycle it responsibly to promote the sustainable reuse of material resources. To return your used device, please use the return and collection systems or contact the retailer where the product was purchased. They can take this product for environmental safe recycling.



EXPLODED VIEW AND PARTS LIST



Manual Parts List

Key Number	Description	Quantity
1	Vacuum port deflector	1
2	Vacuum port assembly	1
3	Container	1
4	Caster assembly	4
5	Handle assembly	1
6	Hose	1
7	Power head assembly	1
8	Extension wands	3

Key Number	Description	Quantity
9	Float & filter cage	1
10	Crevice tool	1
11	Foam filter	1
12	Dust filter	1
13	Latch assembly	2
14	Floor brush	1
15	Dust bag	1
16	Operator's manual	1