

**LOTUS**<sup>®</sup>  
Performance, Delivered.™



## ATOM 4L Wet/Dry Vacuum Cleaner

Made in China/Fabriqué en Chine  
Lotus Tool Group (Philippines)  
[www.lotustools.ph](http://www.lotustools.ph)

69-086369



When using an electrical appliance, basic precautions should always be followed, including the following:  
READ ALL INSTRUCTIONS BEFORE USING THIS APPLIANCE.

## **⚠ WARNING** TO REDUCE THE RISK OF FIRE, ELECTRIC SHOCK OR INJURY:

1. Do not leave appliance when plugged in. Unplug from outlet when not in use and before servicing. Connect to a properly grounded outlet only. See Grounding Instructions.
2. Do not expose to rain – store indoors.
3. Do not allow to be used as a toy. Close attention is necessary when used by or near children.
4. Use only as described in this manual. Use only Manufacturer's recommended attachments.
5. Do not use with damaged cord or plug. If appliance is not working as it should, has been dropped, damaged, left outdoors or dropped into water, contact Lotus® for assistance.
6. Do Not: pull or carry by cord, use cord as a handle, close a door on cord or pull cord around sharp edges or corners. Do not run appliance over cord. Keep cord away from heated surfaces.
7. Do not unplug by pulling on cord. To unplug, grasp the plug; not the cord.
8. Do not handle plug or appliance with wet hands.
9. Do not put any object into openings. Do not use with any openings blocked; keep free of dust, lint, hair and anything that may reduce air flow.
10. Keep hair, loose clothing, fingers and all parts of body away from openings and moving parts.
11. Do not pick up anything that is burning or smoking, such as cigarettes, matches, or hot ashes.
12. Do not use without dust bag and/or filters in place.
13. Turn off all controls before unplugging.
14. Use extra care when cleaning on stairs.
15. Do not use to pick up flammable or combustible liquids such as gasoline or use in areas where they may be present.
16. Do not use your cleaner as a sprayer of flammable liquids such as oil base paints, lacquers, household cleaners, etc.
17. Do not vacuum toxic, carcinogenic, combustible or other hazardous materials such as asbestos, arsenic, barium, beryllium, lead, pesticides or other health endangering materials. Specially designed units are available for these purposes.
18. Do not pick up wood or coal ash; soot, cement, plaster or drywall dust without collection filter bag in place. These are very fine particles that may pass through the foam and affect the performance of the motor or be exhausted back into the air. Additional collection filter bags are available.
19. Do not leave the cord lying on the floor once you have finished the cleaning job. It can become a tripping hazard.
20. Use special care when emptying heavily loaded tanks.
21. To avoid spontaneous combustion, empty tank after each use.
22. The operation of a utility vac can result in foreign objects being blown into eyes, which can result in eye damage. Always wear safety goggles when operating vacuum.
23. STAY ALERT. Watch what you are doing and use common sense. Do not use vacuum cleaner when you are tired, distracted or under the influence of drugs, alcohol or medication causing diminished control.
24. **WARNING** Do NOT use this vacuum cleaner to vacuum lead paint debris because this may disperse fine lead particles into the air. This vacuum cleaner is not intended for use under EPA Regulation 40 CFR Part 745 for lead paint material cleanup.

## SAVE THESE INSTRUCTIONS

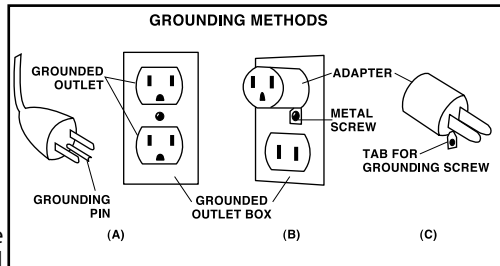
**⚠ WARNING** DO NOT LEAVE VACUUM UNATTENDED WHEN IT IS PLUGGED IN AND/OR OPERATING. UNPLUG UNIT WHEN NOT IN USE.

## GROUNDING INSTRUCTIONS

This appliance must be grounded. If it should malfunction or breakdown, grounding provides a path of least resistance for electric current to reduce the risk of electric shock. This appliance is equipped with a cord having an equipment-grounding conductor and grounding plug. The plug must be inserted into an appropriate outlet that is properly installed and grounded in accordance with all local codes and ordinances.

**⚠ WARNING**— IMPROPER CONNECTION OF THE EQUIPMENT-GROUNDING CONDUCTOR CAN RESULT IN A RISK OF ELECTRIC SHOCK CHECK WITH A QUALIFIED ELECTRICIAN OR SERVICE PERSON IF YOU ARE IN DOUBT AS TO WHETHER THE OUTLET IS PROPERLY GROUNDED. DO NOT MODIFY THE PLUG PROVIDED WITH THE APPLIANCE— IF IT WILL NOT FIT THE OUTLET, HAVE A PROPER OUTLET INSTALLED BY A QUALIFIED ELECTRICIAN

This appliance is for use on a nominal 220-volt circuit, and has a grounded plug that looks like the plug illustrated in sketch A. A temporary adapter that looks like the adapter illustrated in sketches B and C may be used to connect this plug to a 2-pole receptacle as shown in sketch B if a properly grounded outlet is not available. The temporary adapter should be used only until a properly grounded outlet



(sketch A) can be installed by a qualified electrician. The green colored rigid ear, lug or the like extending from the adapter must be connected to a permanent ground such as a properly grounded outlet box cover. Whenever the adapter is used, it must be held in place by a metal screw. Make sure that the appliance is connected to an outlet having the same configuration as the plug. No adapter should be used with this appliance.

## EXTENSION CORDS

When using the appliance at a distance where an extension cord becomes necessary, a 3-conductor grounding cord of adequate size must be used for safety, and to prevent loss of power and overheating. Use the table below to determine A.W.G. wire size required. To determine ampere rating of your vacuum, refer to nameplate located on rear of motor cover.

Before using appliance, inspect power cord for loose or exposed wires and damaged insulation. Make any needed repairs or replacements before using your appliance. Use only three-wire outdoor extension cords which have three-prong grounding-type plugs and three-pole receptacles which accept the extension cord's plug.

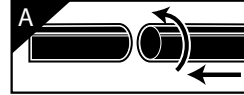
| Volts                      | Total length of cord in feet |    |     |     |
|----------------------------|------------------------------|----|-----|-----|
|                            | 25                           | 50 | 100 | 150 |
| 120V                       |                              |    |     |     |
| Ampere Rating<br>More Than | AWG                          |    |     |     |
| Not More Than              |                              |    |     |     |
| 0 - 6                      | 18                           | 16 | 16  | 14  |
| 6 - 10                     | 18                           | 16 | 14  | 12  |
| 10 - 12                    | 18                           | 16 | 14  | 12  |

When vacuuming liquid, be sure the extension cord connection does not come in contact with the liquid.

NOTE: STATIC SHOCKS ARE COMMON IN DRY AREAS OR WHEN THE RELATIVE HUMIDITY OF THE AIR IS LOW. THIS IS ONLY TEMPORARY AND DOES NOT AFFECT THE USE OF THE APPLIANCE. TO REDUCE THE FREQUENCY OF STATIC SHOCKS IN YOUR HOME, THE BEST REMEDY IS TO ADD MOISTURE TO

# UNPACKING AND SET-UP

1. Remove the tank cover by pushing in the side lugs with thumbs and lifting up on the tabs of the tank cover. Remove any accessories, which may have been shipped in the tank.
2. Before replacing tank cover, refer to Dry Pick Up Operation or Wet Pick Up Operation in this manual to ensure you have the proper filters installed for your cleaning operation.
3. Replace tank cover on the tank by aligning tabs with the lugs. Press down firmly on the upper housing until tank cover snaps into place.
4. Insert machine hose end into inlet of tank. Twist slightly to tighten the connection (Figure A).
5. Attach one of the cleaning accessories (depending on your cleaning requirements) on the accessory end of the hose. Twist slightly to tighten the connection (Figure A).
6. Plug the cord into the wall outlet. Your cleaner is ready for use.  
I = ON O = OFF

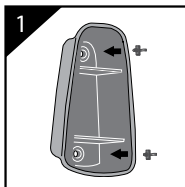


# MOUNTING WALL BRACKET

1. Select mounting location at a wall stud and/or provide a surface which is strong enough to hold the combined weight of the vacuum with a full tank of debris and accessories.

**! WARNING** INADEQUATE MOUNTING COULD ALLOW THE UNIT TO FALL, CAUSING INJURY AND/OR DAMAGE TO THE UNIT.

2. Secure wall bracket to mounting surface with 2 screws provided or other suitable fastener. (NOTE: The screws provided are adequate ONLY for mounting into wood. Be sure to use the proper, suitable fasteners for mounting vacuum to a surface other than wood.) Be sure wall bracket is level (Figure 1).
3. Install vacuum by aligning groove on either side of tank to engage as the vacuum is lowered onto the wall bracket (Figure 2).
4. To avoid possible injury or damage by dislodging vacuum from wall bracket or dropping tank during unlatching, always remove the entire vacuum from wall bracket and set on floor to empty tank or service filter.
5. Before removing vacuum from wall bracket, check to make sure tank cover is secured to tank. To remove vacuum from wall bracket, grasp top handle with one hand and tank bottom with other hand. Slide vacuum off of wall bracket by lifting straight up on vacuum (Figure 3).
6. The tool holder can be mounted on the wall in close proximity to the wall bracket (Figure 4). Secure with mounting hardware provided.



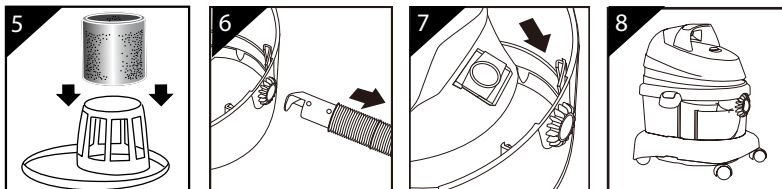
## DRY PICK UP OPERATION

**! WARNING** ALWAYS DISCONNECT THE PLUG FROM THE WALL OUTLET BEFORE REMOVING THE TANK COVER

1. Install foam sleeve and disposable filter bag to pick up dust and dry material only. If the foam sleeve has been used to pick up liquids, the foam sleeve must be cleaned and dried before installing for dry pick up.
2. With tank cover in an upside down position, slide foam sleeve down over lid cage pulling until foam sleeve completely covers lid cage (Figure 5).
3. To install disposable filter bag, remove hose from inlet (Figure 6).
4. Slide collar of filter bag into retainer guides (Figure 7).
5. When secured in place, expand bag and position around the inside of the tank. The disposable filter bag should always be in position when using the foam sleeve for dry pick up (Figure 8).

**! CAUTION** KEEP FILTERS CLEAN

EFFICIENCY OF THE VACUUM IS LARGELY DEPENDENT ON THE FILTER. A CLOGGED FILTER CAN CAUSE OVERHEATING AND POSSIBLY DAMAGE THE CLEANER. CHECK THE FILTER PERIODICALLY AND REPLACE AS REQUIRED.



## WET PICK UP OPERATION

Remove ALL dirt and debris found in the tank. The vacuum requires only a minimum of conversion when going from dry to wet pick up. Wet pick up requires the foam sleeve (not standard on all models) to be in position over the lid cage. Misting in exhaust air may occur if the foam sleeve becomes saturated during wet pick up. If misting occurs, remove and dry the saturated foam sleeve or replace with another dry foam sleeve to eliminate the misting and possible dripping of liquid around the lid. Turn the unit off immediately upon completing a wet pick up job or when tank is full and ready to be emptied. Raise the hose to drain any excess liquid into the tank. The interior of the tank should be periodically cleaned.

The foam sleeve should be cleaned periodically as described in the following steps:

1. Always disconnect the plug from the wall receptacle before removing the tank cover. Place tank cover in an upside down position. Remove foam sleeve by sliding it up and off the lid cage.
2. Shake excess dust off foam sleeve with a rapid up and down movement.
3. Hold foam sleeve under running water for a minute or two, rinsing from the inside. A water wash is not always required, depending on the condition of the foam sleeve.
4. Gently wring out excess water, blot foam sleeve with a clean towel, and allow to dry. The foam sleeve is now ready to be reinstalled on the lid cage.

NOTE: WET PICK UP ACCESSORIES SHOULD BE WASHED PERIODICALLY, ESPECIALLY AFTER PICKING UP WET, STICKY KITCHEN ACCIDENTS. THIS CAN BE ACCOMPLISHED WITH A WARM SOLUTION OF SOAP AND WATER.

## EMPTYING LIQUID WASTE FROM THE TANK

Your Lotus® Wet/Dry vacuum may be emptied of liquid waste by removing the tank cover. To empty, stop the motor and remove the plug from the wall receptacle. Remove the tank cover and deposit the liquid waste contents in a suitable drain. After the tank is empty, return the cover to its original position. To continue use, plug the cord into the wall receptacle and start the motor.

## AUTOMATIC SUCTION SHUT-OFF

The vacuum is equipped with an automatic suction shut-off that operates when picking up liquids. As the level of the liquid rises in the tank, an internal float rises until it seats itself against a seal at the intake of the motor, shutting off suction. When this happens, the motor will develop a higher than normal pitch noise and the suction is drastically reduced. If this occurs, turn unit off immediately. Failure to turn unit off after float rises and shuts off suction will result in extensive damage to the motor. To continue use, empty the liquid waste from the tank as outlined in the previous paragraph.

NOTE: IF ACCIDENTALLY TIPPED OVER, THE VACUUM COULD LOSE SUCTION. IF THIS OCCURS, TURN UNIT OFF AND PLACE VAC IN UPRIGHT POSITION. THIS WILL ALLOW THE FLOAT TO RETURN TO ITS NORMAL POSITION, AND YOU WILL BE ABLE TO CONTINUE OPERATION.

## LUBRICATION

No lubrication is necessary as the motor is equipped with lifetime lubricated bearings.

## STORAGE

Before storing your vacuum cleaner the tank should be emptied and cleaned. The power cord can be wound around the housing of the unit for convenience. The cleaner should be stored indoors.

